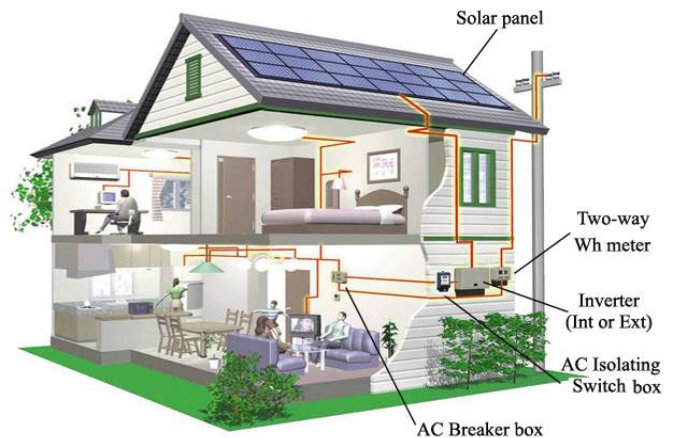




Characteristics

- High performance inverters and solar panels.
- Superior PV energy harvest
- High overload capability under most ambient conditions.
- Full data display and communications.
- Easy and affordable to install.
- Cost advantages.

Functional Diagram



Warranty

SW-SG series products adopt the industry's most advanced technology standard production, strict quality control and layers of test, to ensure the each system of high quality, high reliability.
2 year product warranty.

We provide customized system, OEM &ODM service.

**Technical Data**

Model No.	SW-SG20KW	SW-SG25KW	SW-SG30KW
Grid	Three-phased		
Rated output power	20000W	25000W	30000W
Rated grid voltage	400Vac		
Grid voltage range	320~460Vac		
Grid frequency range	50Hz(47~51.5Hz)/60Hz(57~61.5Hz)		
Power factor	-0.9~+0.9(Adjustable)		
THD	<3%(at rated power)		
Max. inverter efficiency	98.2%	98.2%	98.2%
Solar panel power	20160Wp	25200Wp	30240Wp
Solar panel model	SW240P	SW240P	SW240P
Solar panel number	84PCS	105PCS	126PCS
String number	2/2, 21/21	2/3, 21/21	3/3, 21/21
Operating temperature range	-25℃~+60℃		

Note: The specifications are subject to change without notice.

Estimate of annual power generation (ref.)

Model No.	Peak sun hours per day	Watt-hours per years	CO ₂ emission reduction per years
SW-SG20KW	5hrs	27335KWh	27.3t
SW-SG25KW	5hrs	34134KWh	34.0t
SW-SG30KW	5hrs	41012KWh	40.9t

*The working duration is varied in different season, countries and regions.

Packing (ref.)

Model No.	SW-SG20KW	SW-SG25KW	SW-SG30KW
Packing	Carton	Carton	Carton
Volume/Weight per ser	6.8m ³ / 2450kg	8.5m ³ / 3000kg	10.1m ³ / 3670kg
20Ft (Ref.)	3Sets	3Sets	2Sets
40Ft (Ref.)	6Sets	6Sets	4Sets