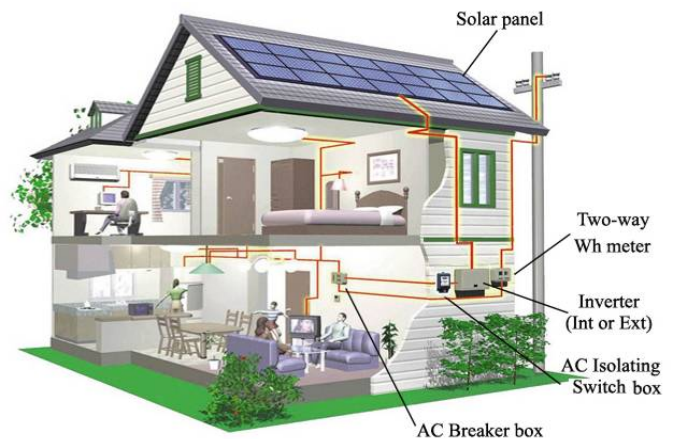




## Characteristics

- High performance inverters and solar panels.
- Superior PV energy harvest
- High overload capability under most ambient conditions.
- Full data display and communications.
- Easy and affordable to install.
- Cost advantages.

## Functional Diagram



## Warranty

SW-SG series products adopt the industry's most advanced technology standard production, strict quality control and layers of test, to ensure the each system of high quality, high reliability.

2 year product warranty.

**We provide customized system, OEM &ODM service.**

**Technical Data**

Model No.	<b>SW-SG12KW</b>	<b>SW-SG15KW</b>	<b>SW-SG17KW</b>
Grid	Three-phased		
Rated output power	12000W	15000W	17000W
Rated grid voltage	400Vac		
Grid voltage range	320~460Vac		
Grid frequency range	50Hz(47~51.5Hz)/60Hz(57~61.5Hz)		
Power factor	-0.9~+0.9(Adjustable)		
THD	<3%(at rated power)		
Max. inverter efficiency	98.0%	98.0%	98.0%
Solar panel power	12240Wp	15360Wp	17280Wp
Solar panel model	SW240P	SW240P	SW240P
Solar panel number	51PCS	64PCS	72PCS
String number	2/1, 17/17	2/2, 16/16	2/2,18/18
Operating temperature range	-25℃~+60℃		

Note: The specifications are subject to change without notice.

**Estimate of annual power generation (ref.)**

Model No.	Peak sun hours per day	Watt-hours per years	CO <sub>2</sub> emission reduction per years
SW-SG12KW	5hrs	16593KWh	16.5t
SW-SG15KW	5hrs	20745KWh	20.7t
SW-SG17KW	5hrs	23338KWh	23.3t

\*The working duration is varied in different season, countries and regions.

**Packing (ref.)**

Model No.	<b>SW-SG12KW</b>	<b>SW-SG15KW</b>	<b>SW-SG17KW</b>
Packing	Carton	Carton	Carton
Volume/Weight per ser	4.1m <sup>3</sup> / 1480kg	5.1m <sup>3</sup> / 1860kg	5.8m <sup>3</sup> / 2100kg
20Ft (Ref.)	6Sets	5Sets	4Sets
40Ft (Ref.)	12Sets	10Sets	8Sets